

# MONTHLY MEMBERSHIP PROGRESS REPORT

LOCATION NETHERLANDS

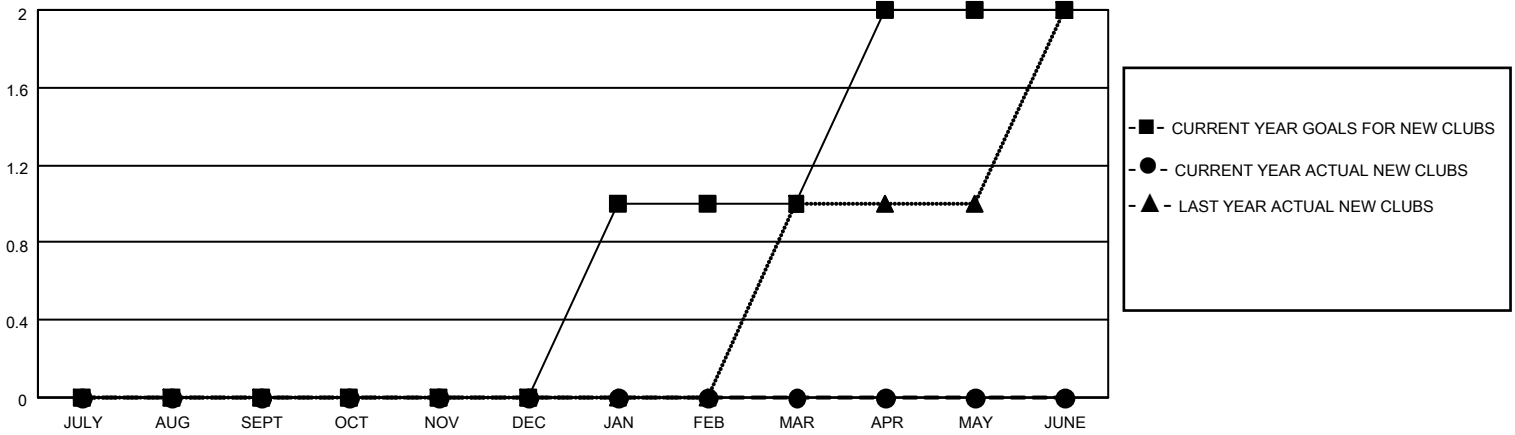
District 110AZ

Results as of: 5/31/2022

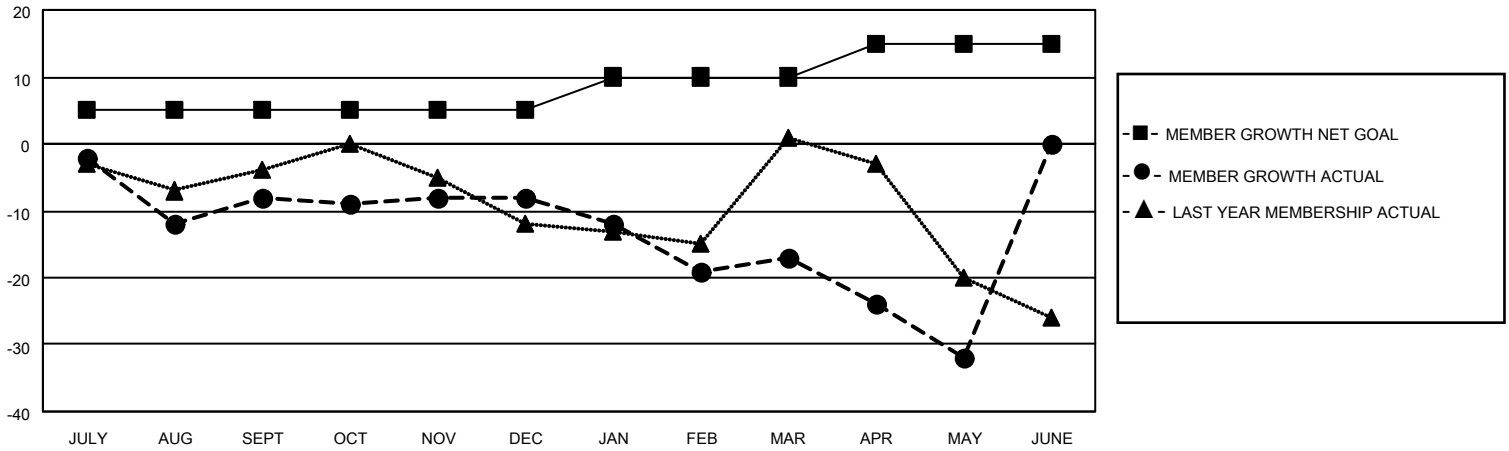
| Clubs                 |               |           |               |
|-----------------------|---------------|-----------|---------------|
| RESULTS FOR 2021-2022 |               |           |               |
| QUARTER               | NEW CLUB GOAL | NEW CLUBS | DROPPED CLUBS |
| JULY/AUG/SEPT         | 0             | 0         | 0             |
| OCT/NOV/DEC           | 0             | 0         | 0             |
| JAN/FEB/MAR           | 1             | 0         | 0             |
| APR/MAY/JUNE          | 1             | 0         | 0             |

| Members               |                        |                      |   |
|-----------------------|------------------------|----------------------|---|
| RESULTS FOR 2021-2022 |                        |                      |   |
| QUARTER               | MEMBER GROWTH NET GOAL | MEMBER GROWTH ACTUAL | DROPPED MEMBERS ACTUAL<br>(including transfers) |
| JULY/AUG/SEPT         | 5                      | 10                   | 18  |
| OCT/NOV/DEC           | 0                      | 19                   | 18  |
| JAN/FEB/MAR           | 5                      | 15                   | 23  |
| APR/MAY/JUNE          | 5                      | 17                   | 28  |

**GOALS AND ACTUAL NEW CLUBS CUMULATIVE**



**GOALS AND ACTUAL MEMBERS CUMULATIVE**



**DROPPED CLUBS: 0**

**27 CLUBS OF 75 ADDED 1 OR MORE NEW MEMBERS**

**GENDER DISTRIBUTION**

|                      |                |
|----------------------|----------------|
| MALE                 | 1,552 (80.25%) |
| FEMALE               | 382 (19.75%)   |
| NON BINARY           | 0 (0.00%)      |
| PREFER NOT TO ANSWER | 0 (0.00%)      |

**DROPPED MEMBERS**

[CLICK HERE FOR CUMULATIVE MEMBERSHIP DATA](#)

|                |           |
|----------------|-----------|
| DECEASED       | 13        |
| CLUB CANCELLED | 0         |
| OTHER          | 74        |
| <b>TOTAL</b>   | <b>87</b> |

|                                 |   |
|---------------------------------|---|
| TOTAL FAMILY UNIT MEMBERS       | 0 |
| FAMILY MEMBERS PAYING HALF DUES | 0 |